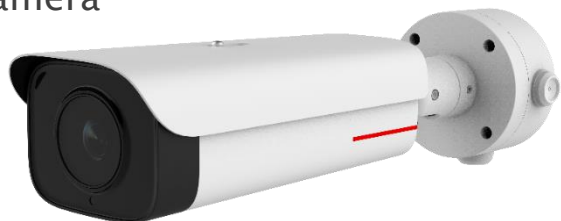


M2220-I

2MP Super starlight IR Bullet Camera

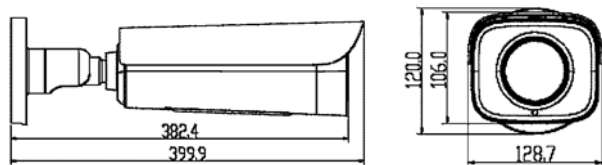


Features

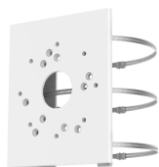
- 1/1.8" progressive scan CMOS
- Dual-channel 1080p HD video encoding
- H.265/H.264 HD low-bit-rate encoding
- Automatic ICR, day/night surveillance, and image enhancement in low illumination conditions
- Ultra Wide Dynamic Range (WDR)
- Defogging
- Built-in infrared light, which supports intelligent infrared and a maximum radiation distance of 50 meters
- Built-in motorized zoom or focus lens that supports automatic and synchronous focus
- Intelligent behavior analysis, audio analysis and metadata backhaul
- Super error concealment (SEC)
- Streams encrypted through AES
- Ultra wide operating voltage range, ultra wide operating temperature range
- PoE and AC/DC power supplies

Dimension

Unit: mm



Optional Accessories



Pole-mount bracket
DTS-11C



Connection box
ACC2501-HW

Specifications

Model Item	M2220-I
Camera	
Image sensor	1/1.8" 2.0 megapixel progressive scan CMOS
Min. illumination	Color: 0.0002 lux (F1.5, AGC ON) B/W: 0.0001 lux (F1.5, AGC ON)
Day/Night mode	Auto/Color/Monochrome (removable infrared-cut filter)
Wide dynamic range (WDR)	120 dB
White balance	Auto-track/Manual/Auto
Highlight suppression	Supported
Image Defogging	Automatic/Manual/Close
Image stabilization	Electronic image stabilization
Digital noise reduction	Self-adaptive to 2D or 3D DNR
Lens & illuminations	
Focal length	2.8-12 mm
Max. iris	F1.5 (W) to F2.8 (T)
Type of iris	P-Iris
Infrared radiation distance	50 m
Function	
Video compression	H.265/H.264/MJPEG
Smart encoding	Extra265/264
Max. resolution	1920 x 1080 (1080P)
Frame rate	60Hz: 60/30/20 to 1fps; 50Hz: 50/25/20 to 1fps
Multiple streaming	Dual-channel 1080p HD video encoding/Five streams
PU access protocol	ONVIF Profile S/G/T protocols, GB/T 28181-2016 and HUAWEI SDKs
Network protocol	TCP, UDP, IPv4, IPv6, DHCP, DHCPv6, DNS, ICMP, ICMPv6, IGMP, HTTPS, FTP, SFTP, RTP, RTSP, RTCP, SIP, ARP, SSL,NTP, SNMP (V1/V2/V3), 802.1x, QoS, DDNS, SMTP, SSH and TLS
Security mode	User name and password authentication, 802.1x, and HTTPS digital certificate
Stream encryption	Stream encryption using the AES256 encryption algorithm, and digital watermark
Alarm actions	Alarm source: motion detection alarm/tampering alarm/Boolean value input alarm/intelligent analysis alarm. Linked object: Boolean value output/preset position/tour track/scanning/SD card recording/SD card snapshot/email sending/Pre-recording
Intelligent analysis	
Behavior analysis	Fast-moving object detection, abandoned object detection, removed object detection, cross line detection, intrusion detection, area enter/exit detection, loitering detection, crowd gathering detection
Exception Detection	Image quality diagnosis, audio analysis, scene change detection and defocus detection
Object Detection	Face detection
Interface	
Ethernet interface	1x RJ-45 10/100/1000 Mbit/s self-adaptive Ethernet interface
Serial interface	1x half-duplex RS-485 port
Alarm interface	2-channel alarm input and 1-channel alarm output
Audio interface	1-channel audio input and 1-channel audio output.
Memory card slot	1x Micro SD/SDHC/SDXC slot supporting memory card up to 256 GB
Analog video	1-channel CVBS output, BNC connector
General parameter	
Power supply	AC24V±25%, DC12V±25%, PoE+
Power consumption	Typical 9 W, maximum 16 W
Operating temperature	-40°C to +60 °C
Operating humidity	5% to 95% (non-condensing)
Surge suppression	6kV
IP protection class	IP67
Vandal-proof class	IK10(except the window)
Railway standards	Complies with the railway-specific EMC standard: EN50121-4
Weight	Net weight: 2.65 kg, gross weight: 3.6 kg
Dimensions	Equipment: 128.7×120.0×399.9 mm; packaging: 533.0×259.0×146.0 mm